

CFI-1000 series

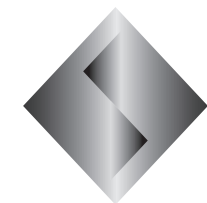
Issued	Checked	Approved
<div>SIE CS '21.07.21 Miyawaki</div>		<div>SIE CS '21.07.21 Monden</div>

SM-PS5-0013E-07

PlayStation®5

ASSY SERVICE MANUAL 7th edition

for EDM-010 BOARD



Sony
Interactive
Entertainment

Sony Interactive Entertainment
CS Department



Published in Japan ©2021.07

SAFETY CHECK-OUT


After correcting the original service problem, perform the following safety checks before releasing the set to the customer:

- 1. Check the area of your repair for unsoldered or poorly soldered connections. Check the entire board surface for solder splashes and bridges.
- 2. Check the interboard wiring to ensure that no wires are “pinched” or contact high-wattage resistors.
- 3. Look for unauthorized replacement parts, particularly transistors, that were installed during a previous repair. Point them out to the customer and recommend their replacement.
- 4. Look for parts which, though functioning, show obvious signs of deterioration. Point them out to the customer and recommend their replacement.
- 5. Check the power cable for cracks and abrasion. Recommend the replacement of any such power cable to the customer.
- 6. Check the B+ voltage to see it is at the values specified.
- 7. Check the metal trim, “metallized” knobs, screws, and all other exposed metal parts for AC leakage. Check leakage as described below.


SAFETY-RELATED COMPONENT WARNING!!

COMPONENTS IDENTIFIED BY MARK  OR DOTTED LINE WITH MARK  ON THE SCHEMATIC DIAGRAMS AND IN THE PARTS LIST ARE CRITICAL TO SAFE OPERATION. REPLACE THESE COMPONENTS WITH SONY PARTS WHOSE PART NUMBERS APPEAR AS SHOWN IN THIS MANUAL OR IN SUPPLEMENTS PUBLISHED BY SONY.

ATTENTION AU COMPOSANT AYANT RAPPORT À LA SÉCURITÉ!!

LES COMPOSANTS IDENTIFIÉS PAR UNE MARQUE  SUR LES DIAGRAMMES SCHÉMATIQUES ET LA LISTE DES PIÈCES SONT CRITIQUES POUR LA SÉCURITÉ DE FONCTIONNEMENT. NE REMPLACER CES COMPOSANTS QUE PAR DES PIÈCES SONY DONT LES NUMÉROS SONT DONNÉS DANS CE MANUEL OU DANS LES SUPPLÉMENTS PUBLIÉS PAR SONY.

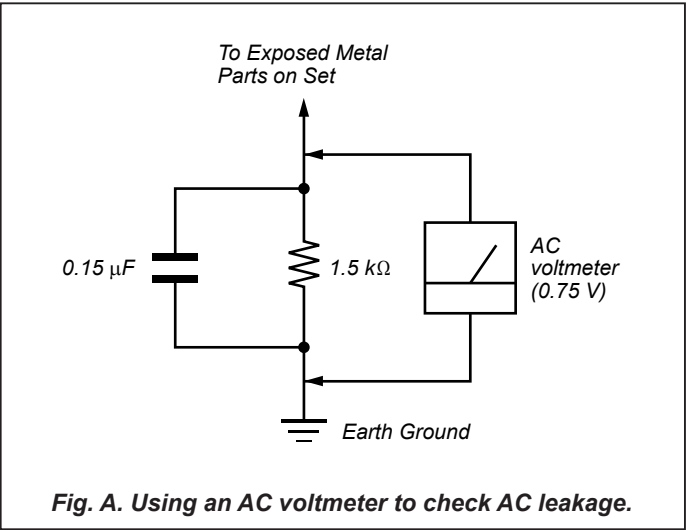
SPECIAL COMPONENT NOTICE

The components identified by mark  contain confidential information. Strictly follow the instructions whenever the components are repaired and/or replaced.

LEAKAGE TEST

The AC leakage from any exposed metal part to earth ground and from all exposed metal parts to any exposed metal part having a return to chassis, must not exceed 0.5 mA (500 microampers.). Leakage current can be measured by any one of three methods.

- 1. A commercial leakage tester, such as the Simpson 229 or RCA WT-540A. Follow the manufacturers’ instructions to use these instruments.
- 2. A battery-operated AC milliammeter. The Data Precision 245 digital multimeter is suitable for this job.
- 3. Measuring the voltage drop across a resistor by means of a VOM or battery-operated AC voltmeter. The “limit” indication is 0.75 V, so analog meters must have an accurate low-voltage scale. The Simpson 250 and Sanwa SH-63Trd are examples of a passive VOM that is suitable. Nearly all battery operated digital multimeters that have a 2 V AC range are suitable. (See Fig. A)



CAUTION:

The use of optical instruments with this product will increase eye hazard.

CAUTION

Use of controls or adjustments or performance of procedures other than those specified herein may result in hazardous radiation exposure.

WARNING!!

WHEN SERVICING, DO NOT APPROACH THE LASER EXIT WITH THE EYE TOO CLOSELY. IN CASE IT IS NECESSARY TO CONFIRM LASER BEAM EMISSION, BE SURE TO OBSERVE FROM A DISTANCE OF MORE THAN 25 cm FROM THE SURFACE OF THE OBJECTIVE LENS ON THE OPTICAL PICK-UP BLOCK.

CAUTION

The use of optical instruments with this product will increase eye hazard. As the laser beam used in this CD/DVD ROM Drive is harmful to eyes, do not attempt disassemble the cabinet. Refer servicing to qualified personnel only.

CAUTION

Ensure that this product is disconnected from the power plug before the laser protective housing is removed.

CAUTION

CLASS 2 LASER RADIATION INSIDE THE EQUIPMENT. DO NOT CONNECT TO AC MAINS WHEN IT IS DISASSEMBLED.

CAUTION

Ensure that this product is disconnected from the power plug before the laser protective housing is removed.

CAUTION

Risk of explosion if battery is replaced by an incorrect type. Dispose of used batteries according to the instructions.

Lithium Batteries

If an equipment is provided with a replaceable lithium battery, the following applies:

- if the battery is placed in an OPERATOR ACCESS AREA, there shall be a warning close to the battery or in both the operating and the service instructions:
- if the battery is placed elsewhere in the equipment, there shall be a warning close to the battery or in the service instructions.

CHANGE NOTE

Edition	Date	Description
1st	2020/09/16	
2nd	2020/10/02	Add J1(SKZ) Without DRIVE and Red characters.
3rd	2020/10/21	Add J1(SKZ) With DRIVE , E32(FOX) and Red characters.
4th	2021/01/13	Add and Change Red characters.
5th	2021/04/12	Add CN9(FOX) and Change Red characters.
6th	2021/06/16	Add UCS(Goertek) and Change Red characters.
7th	2021/07/21	Change Red characters.



TABLE OF CONTENTS


- 1-1. OVERALL SECTION
- 1-2. UPPER SIDE SECTION
- 1-3. LOWER SIDE SECTION
- 1-4. MCB BLOCK SECTION
- 1-5. BD BLOCK SECTION
- 1-6. ACCESSORIES & PACKING MATERIALS

SECTION 1
EXPLODED VIEWS

NOTE:

- The mechanical parts with no reference number in the exploded views are not supplied.
- Accessories are given in the last of this parts list.

The components identified by mark  or dotted line with mark  are critical for safety. Replace only with part number specified.


Les composants identifiés par une marque  sont critiques pour la sécurité. Ne les remplacer que par une pièce portant le numéro spécifié.

NOTE:

- SC Classification:
S : Supplied parts U : Unsupplied parts

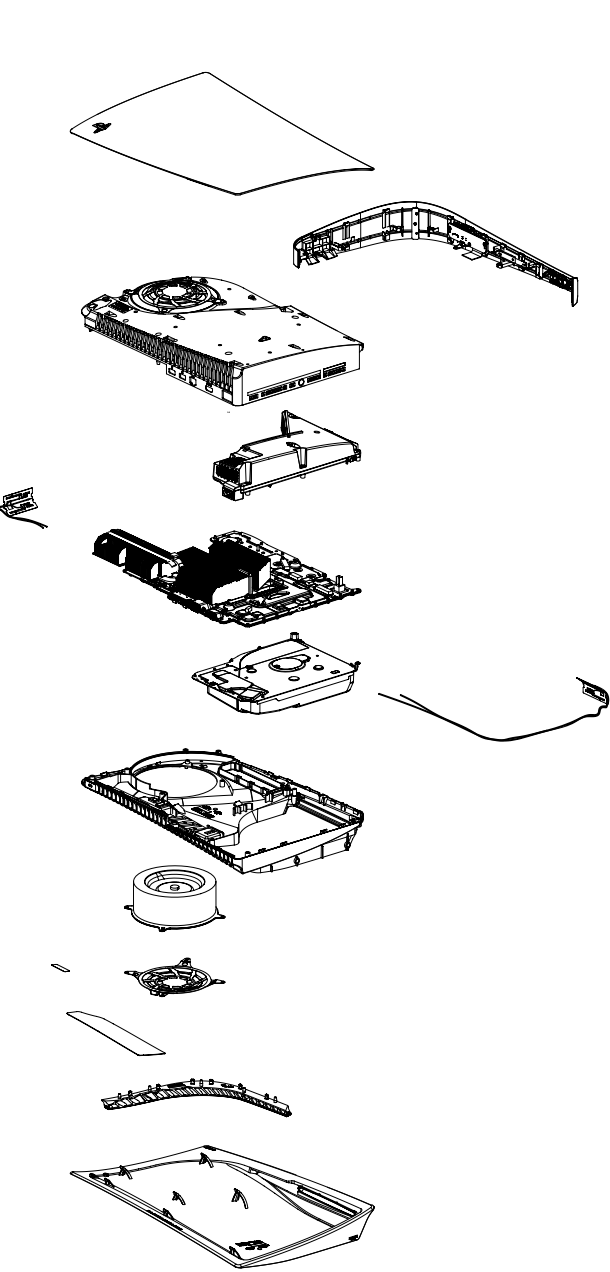
CAUTION
Use of controls or adjustments or performance of procedures other than those specified herein may result in hazardous radiation exposure.

SPECIAL COMPONENT NOTICE

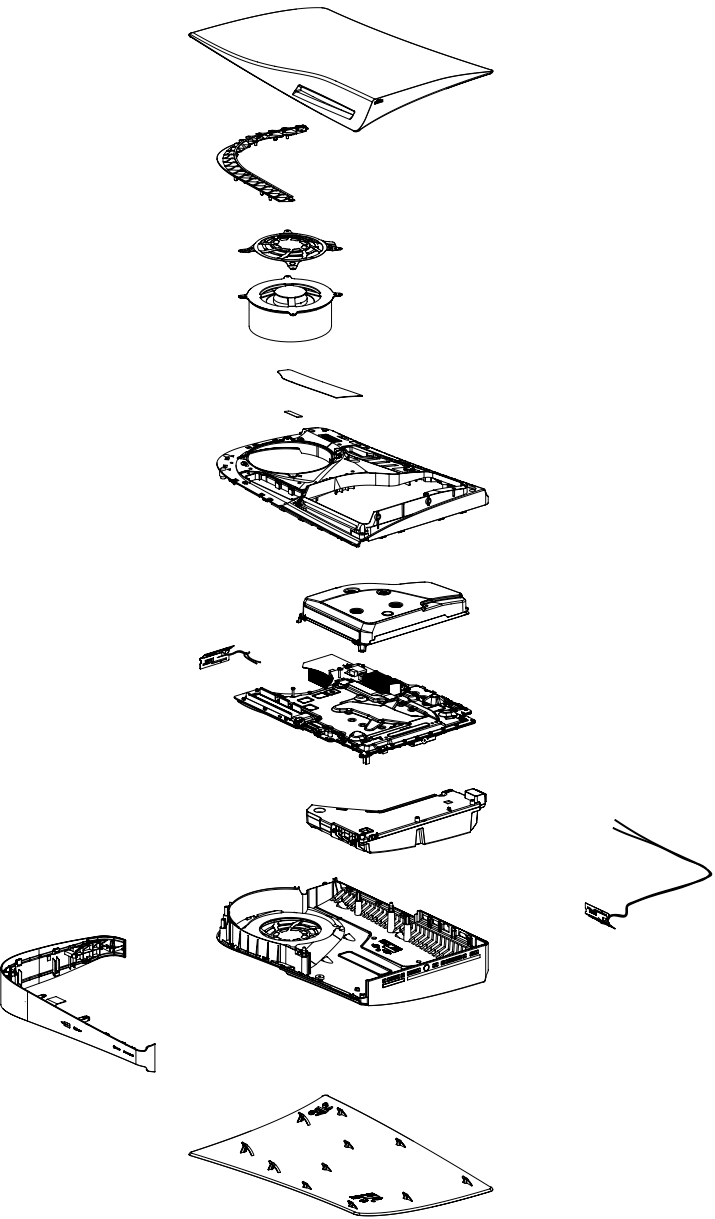
The components identified by mark  contain confidential information. Strictly follow the instructions whenever the components are repaired and/or replaced.

Addreviated name for Color Variation:
Color : Original

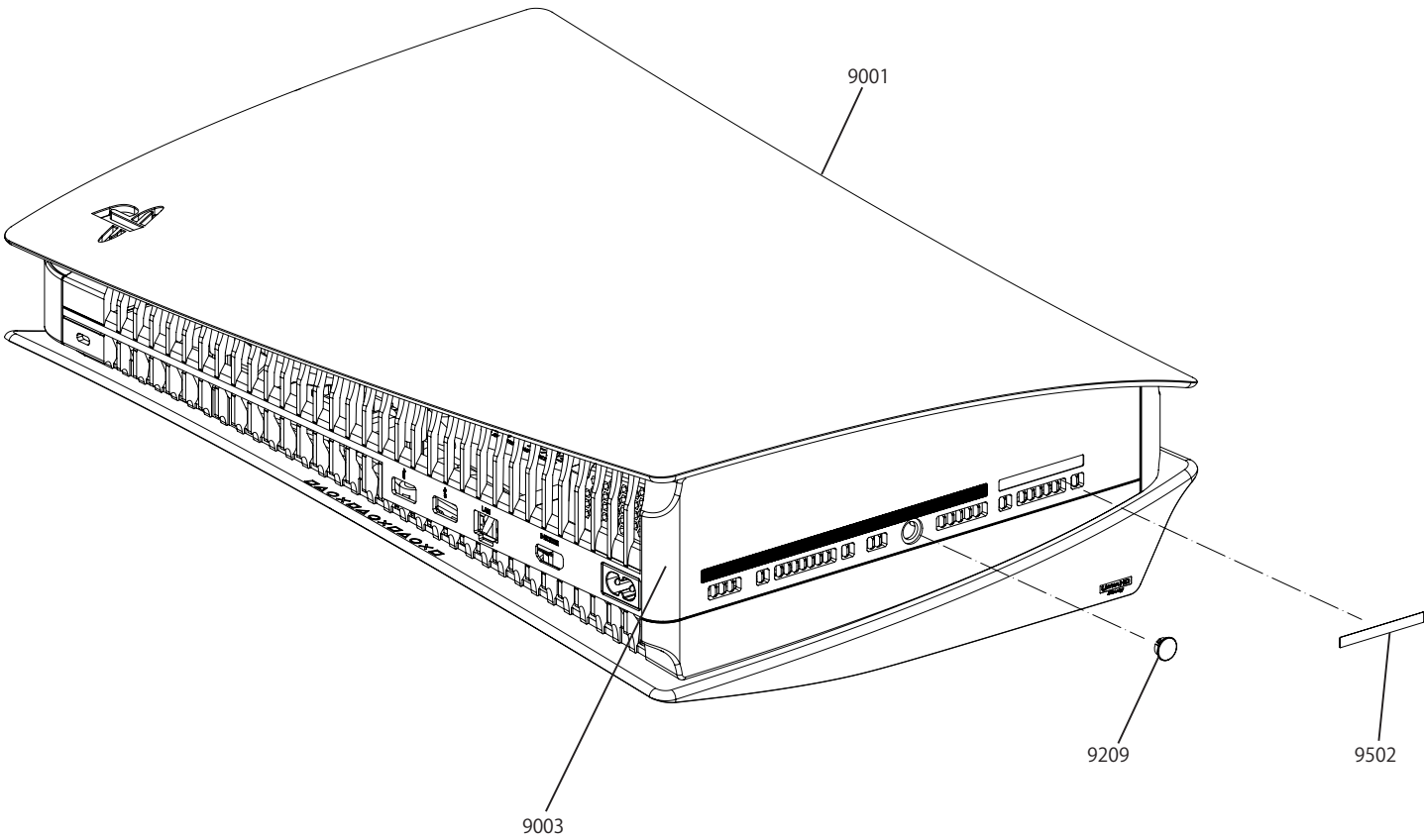
UPPER SIDE VIEW



LOWER SIDE VIEW



1-1. OVERALL SECTION



	<u>Ref. No</u>	<u>Part No.</u>	<u>Description</u>	<u>Remarks</u>
S	9209	5-019-677-01	BASE CAP	
S	9001	5-016-786-01	PANEL UPPER	

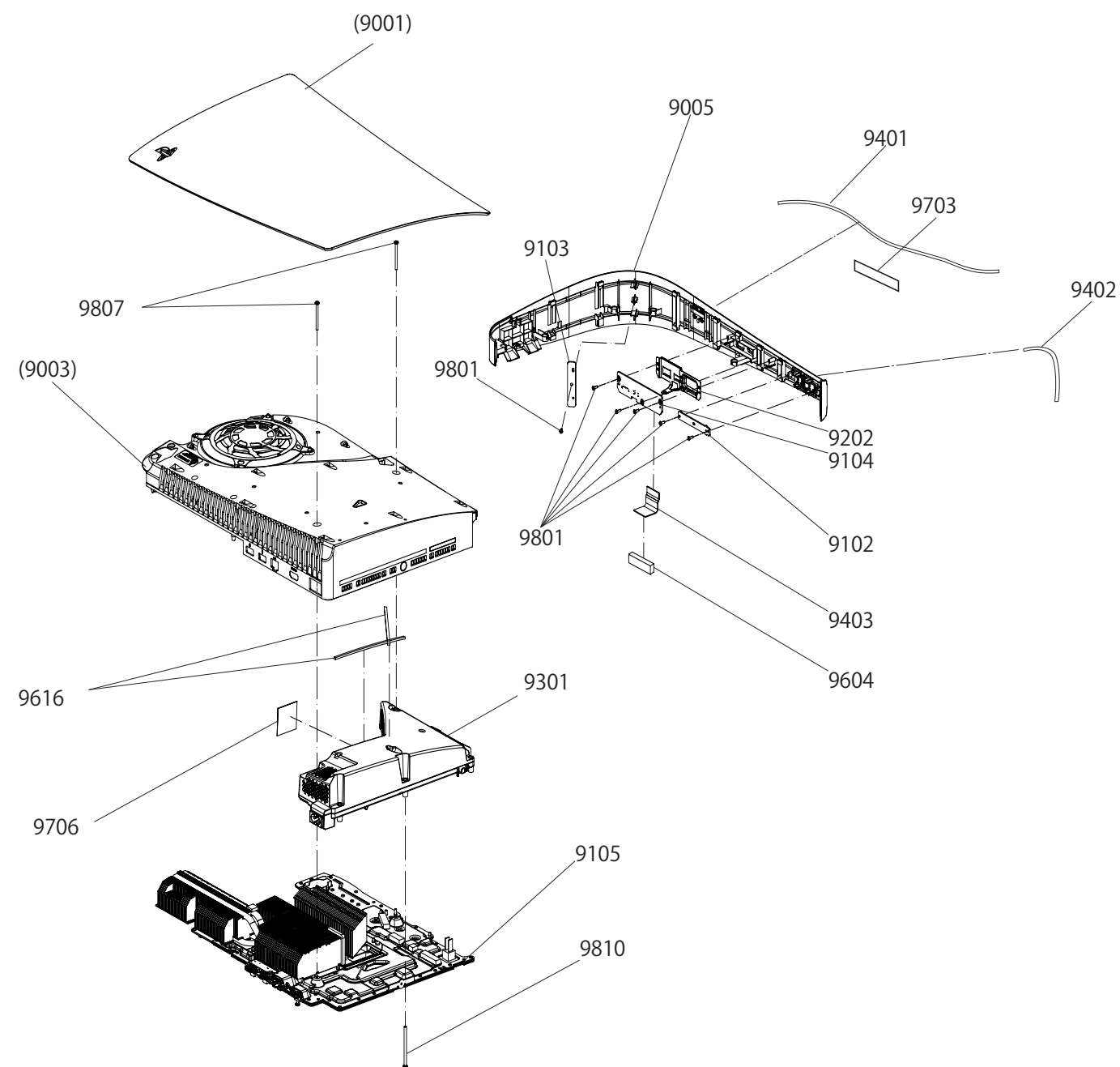
SC	Ref. No.	Description	Specification	Part No.				
S△	9003	CABINET ASSY, UPPER (S)	with BD-Drive	J (SKZ)	J (EMS)	AU3(EMS)	RU3(EMS)	CN9(EMS)
				A-5024-633-B	A-5024-634-B	A-5024-632-A	A-5025-285-A	A-5025-760-A
				BR2(EMS)	UCS(SKZ)	UCS(EMS)	EU8(EMS)	E32(EMS)
				A-5025-286-A	A-5024-629-A	A-5024-631-A	A-5024-630-A	A-5025-759-A
				UCS(C2)				
				A-5032-116-A				
			without BD-Drive <Digital Edition>	J (SKZ)	J (EMS)	AU3(EMS)	RU3(EMS)	CN9(EMS)
				A-5024-628-A	A-5024-627-A	A-5024-626-A	A-5025-283-A	A-5025-762-A
				BR2(EMS)	UCS(SKZ)	UCS(EMS)	EU8(EMS)	E32(EMS)
				A-5025-284-A	A-5024-623-A	A-5024-625-A	A-5024-624-A	A-5025-761-A

Remarks				C2 : Manufactured by Goertek.				
---------	--	--	--	-------------------------------	--	--	--	--

S	9502	LABEL, SERIAL	with BD-Drive	J	AU3	RU3	CN9	BR2
				9-886-040-07	9-886-040-03	9-886-040-13	9-886-040-20	9-886-040-15
				UCS	EU8	E32		
				9-886-040-01	9-886-040-02	9-886-040-17		
			without BD-Drive <Digital Edition>	J	AU3	RU3	CN9	BR2
				9-886-040-08	9-886-040-06	9-886-040-14	9-886-040-19	9-886-040-16
				UCS	EU8	E32		
				9-886-040-04	9-886-040-05	9-886-040-18		

The components identified by mark △ or dotted line with mark △ are critical for safety. Replace only with part number specified.	Les composants identifiés par une marque △ sont critiques pour la sécurité. Ne les remplacer que par une pièce portant le numéro spécifié.
--	--

1-2. UPPER SIDE SECTION

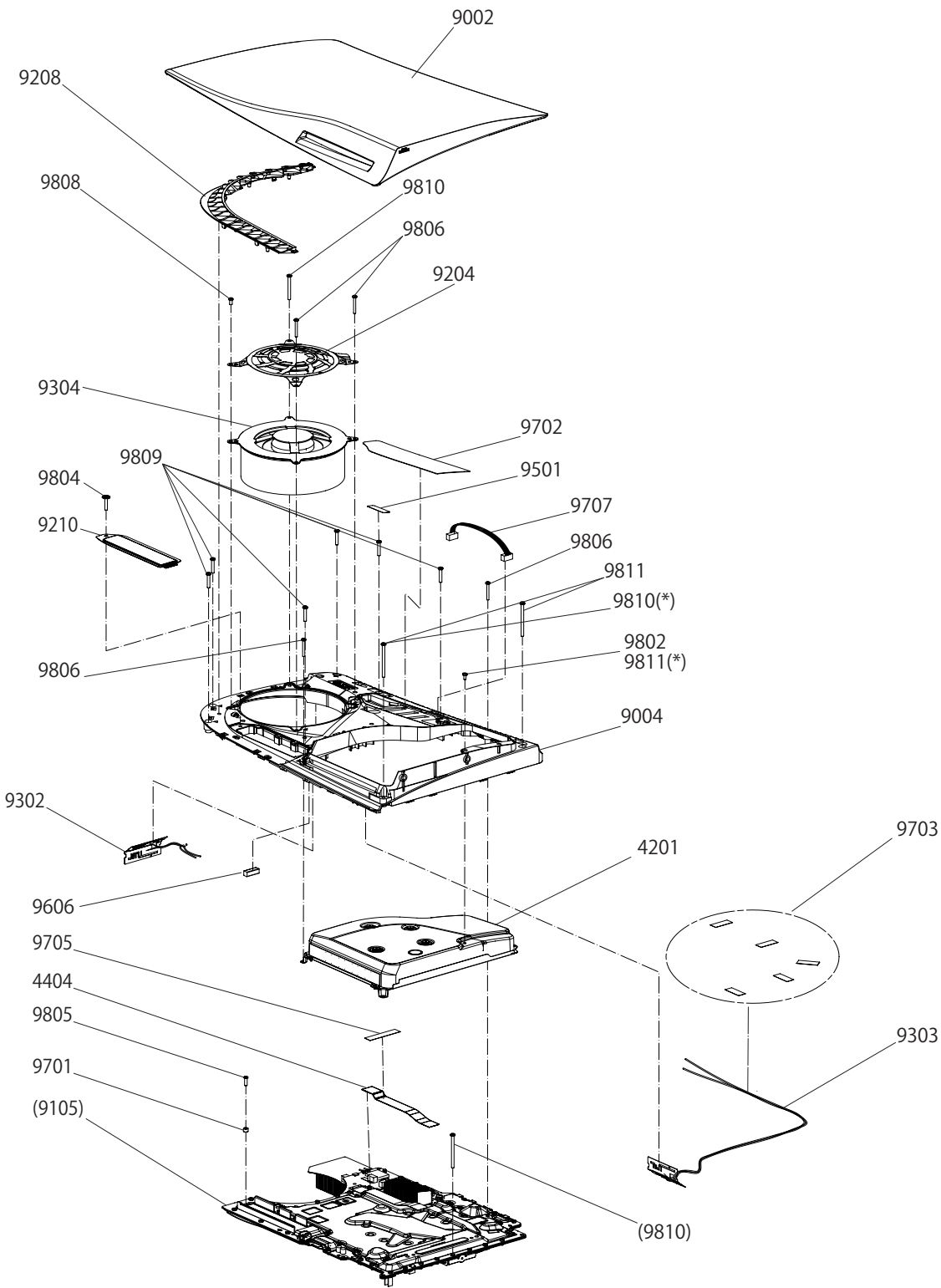


SC	Ref No.	Description	Specification	Part No.	Remarks
S△	9005	CABINET ASSY , FRONT	with BD-Drive	X-5001-737-2	
			without BD-Drive <Digital Edition>	X-5001-736-1	
S	9102	EDS-010 COMPL	with BD-Drive	A-5021-711-A	
			without BD-Drive <Digital Edition>	A-5023-190-A	
S△	9105	EDM-010 COMPL (E)(M) ASSY (S)	with BD-Drive	A-5024-806-B	except CN9
		EDM-010 COMPL (E)(M) ASSY (S) CN9	with BD-Drive	A-5037-777-A	Only for CN9
		EDM-010 COMPL (D)(M) ASSY (S)	without BD-Drive <Digital Edition>	A-5024-807-B	except CN9
		EDM-010 COMPL (D)(M) ASSY (S) CN9	without BD-Drive <Digital Edition>	A-5037-778-A	Only for CN9

SC	Ref. No.	Part No.	Description	Remarks
S	9103	A-5021-714-A	EDL-010 COMPL	
S	9104	A-5021-717-A	EDU-010 COMPL	
S	9202	5-016-780-01	USB SHIELD	
S△	9301	1-008-791-12	SWITCHING REGULATOR	
S△	9401	1-008-451-11	CABLE, FLEXIBLE FLAT(FFC6EALS)	
U△		1-008-452-11	CABLE, FLEXIBLE FLAT(FFC6EALL)	
S△	9402	1-008-453-11	CABLE, FLEXIBLE FLAT(FFC6EASS)	
U△		1-008-454-11	CABLE, FLEXIBLE FLAT(FFC6EASL)	
S△	9403	1-008-792-11	CABLE, FLEXIBLE FLAT(40AUS)	
U△	9403	1-008-793-12	CABLE, FLEXIBLE FLAT(40AUL)	
S	9604	5-019-951-01	GASKET USB FRONT	
S	9616	5-023-151-01	CUSHION (110X3X2)	
S	9703	5-019-947-01	HARNESS FASTENING TAPE	
S	9706	5-023-153-01	TAPE (ACDC)	
S	9801	4-589-502-12	SCREW	
S	9807	5-019-960-01	SCREW M2.5X28	
S	9810	5-019-964-01	SCREW P3X30	

The components identified by mark △ or dotted line with mark △ are critical for safety. Replace only with part number specified.	Les composants identifiés par une marque △ sont critiques pour la sécurité. Ne les remplacer que par une pièce portant le numéro spécifié.
--	--

1-3. LOWER SIDE SECTION

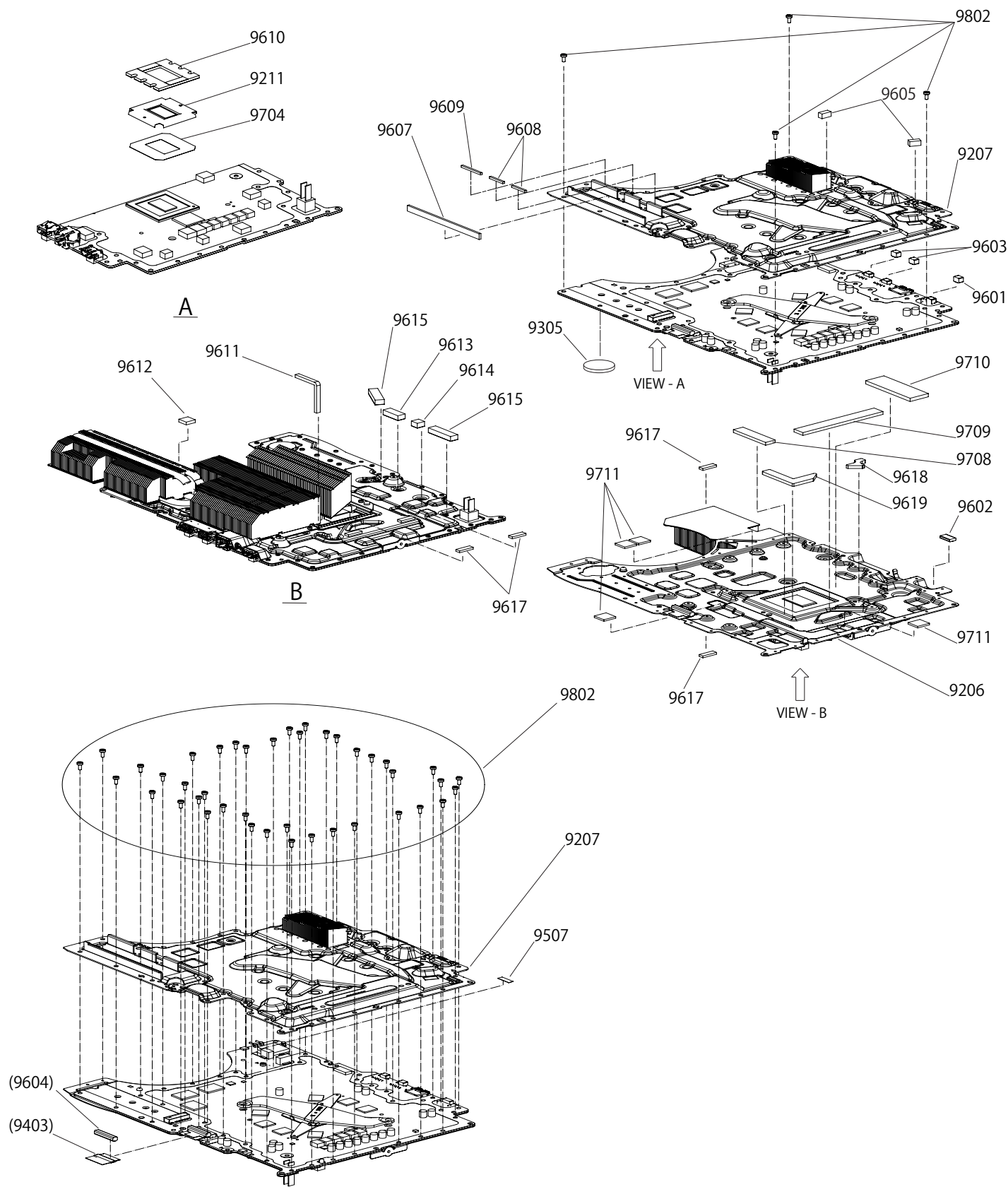


SC	Ref No.	Description	Specification	Part No.				
S	9002	PANEL LOWER	with BD-Drive	5-016-788-01				
			without BD-Drive <Digital Edition>	5-016-787-01				
S	9004	CABINET LOWER	with BD-Drive	5-016-793-01				
			without BD-Drive <Digital Edition>	5-016-792-01				
S	9501	SEAL , SCREW		J	AU3	RU3	CN9	BR2
				5-019-976-02	5-019-976-12	5-019-976-22	5-019-976-42	5-019-976-02
				UCS	EU8	E32		
S	9702	CONNECTOR SEAL	with BD-Drive	5-019-946-01				
			without BD-Drive <Digital Edition>	5-019-967-01				

SC	Ref. No.	Part No.	Description	Remarks
- △	4201	A-5021-671-A	DRIVE COMP ASSY (EA)(W)(CO)	with BD-Drive
S △	4404	1-008-396-11	CABLE, FLEXIBLE FLAT(FFC25EAS)	
U △	4404	1-008-397-11	CABLE, FLEXIBLE FLAT(FFC25EAL)	
S	9204	5-016-795-01	FAN GUARD LOWER	
S	9208	5-016-794-01	INTAKE LOWER	
S	9210	5-016-781-01	M.2 SHIELD	
S △	9302	1-008-839-11	ANTENNA	
U △	9302	1-008-841-12	ANTENNA	except E32
S △	9303	1-008-840-11	ANTENNA	
U △	9303	1-008-842-11	ANTENNA	except E32
S △	9304	1-009-216-11	DC FAN (G12L12MS1AH-56J14)	
U △	9304	1-008-937-14	DC FAN (12047GA12MWB01)	except E32
U △	9304	1-009-217-11	DC FAN (KSB1212HGG4E)	except E32
S	9606	5-019-944-01	GASKET M2 SIDE	
S	9701	5-019-945-01	SPACER M.2	
S	9703	5-019-947-01	HARNESS FASTENING TAPE	
S	9705	5-019-968-01	FFC FASTENING TAPE	
S	9707	1-008-398-11	HARNESS, POWER E-N (DRIVE4PAF)	with BD-Drive
S	9802	5-019-941-01	SCREW S2.5X5.7	
S	9804	5-019-957-01	SCREW M3X16(SHAPES)	
S	9805	5-019-958-01	SCREW M3X10	
S	9806	5-019-959-01	SCREW S2.5X22	
S	9808	5-019-962-01	SCREW P3X10	
S	9809	5-019-963-01	SCREW P3X17	
S	9810	5-019-964-01	SCREW P3X30	
S	9810(*)	5-019-964-01	SCREW P3X30	without BD-Drive <Digital Edition>
S	9811	5-019-965-01	SCREW P3X42	
S	9811(*)	5-019-965-01	SCREW P3X42	without BD-Drive <Digital Edition>




The components identified by mark △ or dotted line with mark △ are critical for safety. Replace only with part number specified.	Les composants identifiés par une marque △ sont critiques pour la sécurité. Ne les remplacer que par une pièce portant le numéro spécifié.
--	--

1-4. MCB BLOCK SECTION

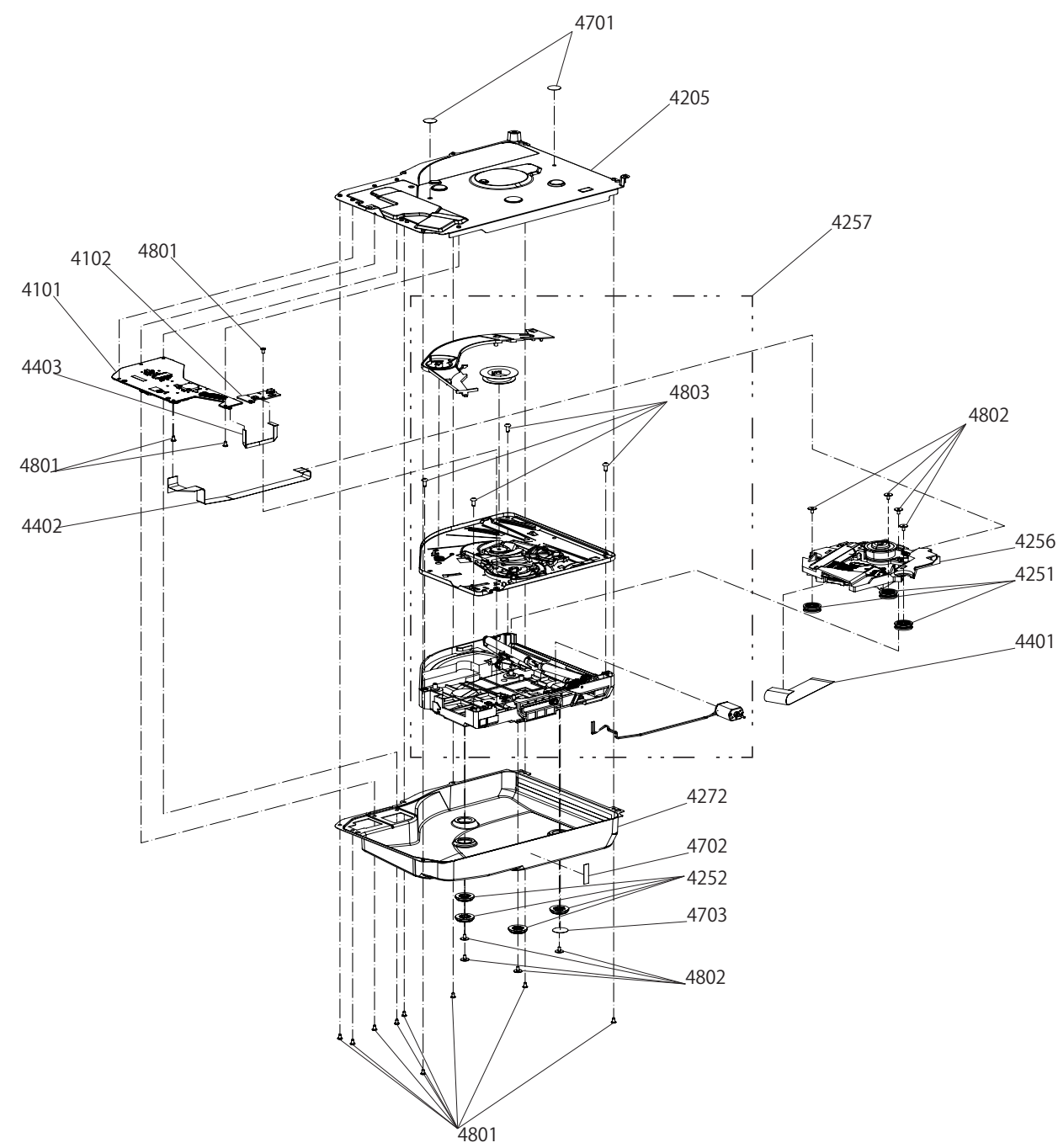


SC	Ref. No.	Description	Specification	Part No.	Remarks
U	9207	SHIELD ASSY, LOWER (E)	with BD-Drive	X-5001-734-1	Included in MCB BLOCK
		SHIELD ASSY, LOWER (D)	without BD-Drive <Digital Edition>	X-5001-877-1	

SC	Ref. No.	Part No.	Description	Remarks
(U)	9206	X-5001-733-1	SHIELD ASSY, UPPER	
S	9305	1-756-873-12	BATTERY, LITHIUM (CR2032 TYPE)	
U	9305	1-853-172-11	BATTERY, LITHIUM (CR2032 TYPE)	
U	9305	1-853-172-22	BATTERY, LITHIUM (CR2032 TYPE)	
S	9507	5-025-345-01	LABEL (BR)	for BR2
S	9601	5-019-948-01	GASKET HDMI LOWER	
S	9602	5-019-949-01	GASKET HDMI UPPER	
S	9603	5-019-950-01	GASKET USB REAR	
S	9605	5-019-952-11	GASKET DRIVE	with BD-Drive
S	9607	5-019-953-01	GASKET M2 FRONT	
S	9608	5-019-954-01	GASKET M2 REAR A	
S	9609	5-019-955-01	GASKET M2 REAR B	
S	9611	5-019-970-01	CUSHION HEATSINK (55X4X3)	
S	9612	5-021-899-01	CUSHION HEATSINK (10X10X3)	
(U)	9613	5-023-148-01	CUSHION (20X8X5)	
(U)	9614	5-023-149-01	CUSHION (8X8X5)	
(U)	9615	5-023-150-01	CUSHION (30X8X5)	
(U)	9617	5-023-154-01	CUSHION (5X15X2)	with BD-Drive
S	9618	5-022-928-01	HEATSINK G6 A	except EDM-010 COMPL(E)(M) , EDM-010 COMPL(D)(M) , Manufactured by GoerTek
S	9619	5-022-929-01	HEATSINK G6 B	except EDM-010 COMPL(E)(M) , EDM-010 COMPL(D)(M) , Manufactured by GoerTek
S	9708	5-022-930-02	SHEET (3(43.5X10.5)),RADIATION	except EDM-010 COMPL(E)(M) , EDM-010 COMPL(D)(M) , Manufactured by GoerTek
S	9709	5-022-930-12	SHEET (3(88X12)), RADIATION	except EDM-010 COMPL(E)(M) , EDM-010 COMPL(D)(M) , Manufactured by GoerTek
S	9710	5-022-931-02	SHEET (3.5(60X20)), RADIATION	except EDM-010 COMPL(E)(M) , EDM-010 COMPL(D)(M) , Manufactured by GoerTek
S	9711	5-030-200-01	SHEET(13X13X1.7),COIL	
S	9610	5-019-969-01	CUSHION SOC	
S	9704	5-019-972-01	SHEET SOC	
S	9211	A-5032-117-A	CAP ASSY	
(U)		5-019-971-01	CAP SOC	
(U)		7-500-003-45	SEALING AGENT (SGS3350B) 25G	
S	9802	5-019-941-01	SCREW S2.5X5.7	Only 6 Pieces included in MCB BLOCK
S		7-500-003-84	GREASE (CGW-3) 140G BLU	
S		7-500-003-43	GREASE (DRG-01B) 500G SIL	
S		7-640-026-18	THERMAL GREASE (SMX-8332) 200G	except EDM-010 COMPL(E)(M) , EDM-010 COMPL(D)(M) , Manufactured by GoerTek

The components identified by mark  or dotted line with mark  are critical for safety. Replace only with part number specified.	Les composants identifiés par une marque  sont critiques pour la sécurité. Ne les remplacer que par une pièce portant le numéro spécifié.
--	--

1-5. BD BLOCK SECTION



SC	Ref. No.	Part No.	Description	Remarks
S	4101	A-5021-673-A	UHN-010 COMPL(CO)	
S	4102	A-5021-675-A	NLU-002 COMPL	
U	4205	5-016-056-01	CASE TOP	
U	4251	5-018-642-02	INSULATOR(BU)	
U	4251	5-018-642-11	INSULATOR(BU)	
(U)	4252	5-018-643-01	INSULATOR(BASE)	
(U)	4252	5-018-643-11	INSULATOR(BASE)	
S △	4256	8-820-483-01	DEVICE, OPTICAL KEM-497AAA/C2N	
U △	4256	8-820-483-02	DEVICE,OPTICAL KEM-497AAA/C2N1	except J1
U △	4256	8-820-483-03	DEVICE,OPTICAL KEM-497AAA/C2N2	
S	4257	A-5021-379-G	FRAME COMPL ASSY (A) (A)	
U	4257	A-5021-380-G	FRAME COMPL ASSY (A) (W)	except J1
S △	4401	1-008-391-11	CABLE, FLEXIBLEF LAT(FFC40EAS)	
U △	4401	1-008-392-11	CABLE, FLEXIBLE FLAT(FFC40EAL)	
U △	4401	1-008-793-11	CABLE, FLEXIBLE FLAT(FFC40AUL)	
S △	4402	1-008-394-11	CABLE, FLEXIBLE FLAT(FFC09EAS)	
U △	4402	1-008-395-11	CABLE, FLEXIBLE FLAT(FFC09EAL)	
U △	4403	1-008-400-11	CABLE, FLEXIBLE FLAT(FFC06EAL)	
S △	4403	1-008-393-11	CABLE, FLEXIBLE FLAT(FFC06EAS)	
S	4701	5-016-086-01	SHEET(TOP)	
S	4702	5-018-353-01	TAPE AL(20X5)	
S	4703	4-694-589-01	SHEET (EM)	
S	4801	4-594-140-21	SCREW M2X4	
S	4802	5-016-087-01	SCREW P2	
S	4803	5-016-089-01	SCREW B2.5	

The components identified by mark △ or dotted line with mark △ are critical for safety. Replace only with part number specified.	Les composants identifiés par une marque △ sont critiques pour la sécurité. Ne les remplacer que par une pièce portant le numéro spécifié.
--	--

1-6. ACCESSORIES & PACKING MATERIALS

SC	Ref. No.	Part No.	Description	Remarks
S	9901	1-008-794-32	USB2.0 CABLE A TO C(J)	Only for UCS
S	9901	1-008-795-22	USB2.0 CABLE A TO C(L)	
S	9902	5-020-166-01	PROTECTION SHEET (1200X700)	
S	9905	A-5021-757-A	BASE ASSY(E)	with BD-Drive
S	9905	A-5023-314-A	BASE ASSY(D)	without BD-Drive <Digital Edition>
S	9911	1-008-483-12	HDMI CABLE	Only for UCS
S	9911	1-008-483-22	HDMI CABLE	
S	9917	5-020-060-01	CUSHION L	with BD-Drive
S	9918	5-020-061-01	CUSHION R	
S	9919	5-020-969-01	ACC BOX	
S	9920	5-020-970-01	ACC PARTITION	
S	9921	5-030-275-01	HANDLE(MEASURES)	

SC	Ref. No.	Description	Specification	Part No.									
S△	9913	CONTROLLER, WIRELESS		J	AU3	RU3	CN9	BR2	UCS	EU8	E32		
				F-2741-886-7	F-2741-886-6	F-2741-886-6	F-2741-886-9	F-2741-886-6	F-2741-886-6	F-2741-886-6	F-2741-886-6	F-2741-886-8	
S△	9904	CORD, POWER		J	AU3	RU3	CN9	BR2	UCS	EU8	E32		
				1-009-312-51	1-009-366-62	1-009-310-62	1-009-318-61	1-009-320-62	1-009-308-71	-		1-009-337-81	
S	9907	INDIVIDUAL CARTON	with BD-Drive	J (EMS)	J (SKZ)	AU3	RU3	CN9	BR2	UCS (EMS)	UCS (SKZ)	EU8	E32
				5-020-733-01	5-021-978-01	5-020-734-01	5-020-736-01	5-020-735-02	5-020-736-01	5-020-736-01	5-021-974-01	5-020-736-01	5-020-737-02
			without BD-Drive <Digital Edition>	J (EMS)	J (SKZ)	AU3	RU3	CN9	BR2	UCS (EMS)	UCS (SKZ)	EU8	E32
				5-021-961-01	5-021-979-01	5-021-849-01	5-020-736-01	5-027-764-02	5-020-736-01	5-020-736-01	5-021-974-01	5-020-736-01	5-023-957-02
S	9908	MATSER CARTON (2)	with BD-Drive	J (EMS)	J (SKZ)	AU3	RU3	CN9	BR2	UCS (EMS)	UCS (SKZ)	EU8	E32
				5-020-744-01	5-020-751-01	5-020-745-01	5-020-820-01	5-020-746-02	5-020-747-01	5-020-748-01	5-020-059-01	5-020-750-01	5-020-749-01
			without BD-Drive <Digital Edition>	J (EMS)	J (SKZ)	AU3	RU3	CN9	BR2	UCS (EMS)	UCS (SKZ)	EU8	E32
				5-021-967-01	5-021-966-01	5-021-852-01	5-023-467-01	5-027-765-02	5-023-466-01	5-021-850-01	5-020-971-01	5-021-851-01	5-023-958-01

The components identified by mark △ or dotted line with mark △ are critical for safety. Replace only with part number specified.	Les composants identifiés par une marque △ sont critiques pour la sécurité. Ne les remplacer que par une pièce portant le numéro spécifié.
--	--